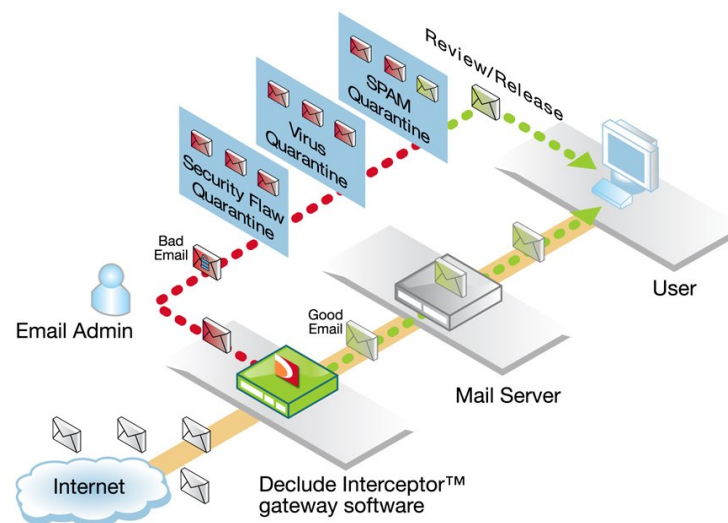


Declude Interceptor Installation Guide

Thank you for your interest in Declude Interceptor. The trial of Declude Interceptor you are installing consists of two major components:

- Declude Interceptor SMTP Engine: This component intercepts all incoming mail at the SMTP layer on port 25 and performs a first round of checks before passing the mail to the Filtering Engine.
- Declude Interceptor Filtering Engine: This component performs a second round of checks, scanning for viruses and filtering junk mail. By default, virus infected mail is quarantined and junk mail is held on the Gateway server, but this is configurable.

If the incoming mail passes the safety checks in these two rounds, Declude Interceptor allows the mail to pass through to your company's mail server. The following figure illustrates the flow of mail through your system after Interceptor is up and running:



QuickStart

The rest of this manual describes in great detail every step of the installation and configuration process. But the process is really quite simple and it should take you no more than fifteen – 30 minutes to complete the following 8 steps. If you need greater amplification on any of these steps, click on the bold step title to go to that section of this Installation Guide, where you will find complete descriptions of screens, fields, entries, buttons, and navigation.

1. Download Declude Interceptor: At <http://www.declude.com/interceptor/intry.asp>, enter the requested information, click the Register button, and copy the license key.
2. Install Declude Interceptor: Click on the link [Download your Interceptor free trial software](#), click the Run button in the File Download dialog, and perform the indicated action in each InstallShield screen. In the GetHostName dialog, enter the same host

name you entered when signing up for the trial in step 1 and enter the license key you received and saved in step 1. The installation is complete, click Finish.

3. Start the SMTP Gateway and the Windows Service: Launch the executable C:\Interceptor\Alligate\AgGWConfig.exe to bring up the Declude Interceptor UI. (The page contains two panels: clicking on a link in the Selections panel displays the Declude Interceptor page of the same name in the right panel.) In addition, open the Windows Service Manager and make sure that the decludeproc service is started.
4. Rout Mail to Your Mail Server: In the Selections panel, click the [Routing](#) link to display the Routing page. Click the Add button under the Primary Domains list, and in the Add a Domain dialog enter (a) the Domain Name ('major' domain) on your mail server; (b) server; the Initial Destination IP, which is your mail server's IP address (this is typically your SMTP server).
5. Use the Wizard to Complete the Setup: Click on the [Wizards](#) link in the Selections panel (the last link in the list) and, one by one, click the Set to recommended defaults button for each wizard. This will pre-fill the remaining Declude Interceptor settings with recommended default values.
6. Start the Services: Click on the [Services](#) link and, one by one, click on the Start button for each of the six services.
7. Send SMTP Traffic to the SMTP Engine: The best option is to redirect traffic by protocol at your router or firewall by defining a routing rule that instructs the router/firewall to send all SMTP or port 25 traffic to the Declude Interceptor server's IP address. If this is not an option, then you can change MX records.
8. If IIS is Running: Open the IIS manager and stop the Default SMTP server as well as any other virtual SMTP servers you might have configured. In addition, open the Windows Service Manager, stop the MS SMTP service, and set the properties of the service so that it can only be started manually.

Download Declude Interceptor

1. Navigate to <http://www.declude.com/interceptor/inttry.asp> to display the Declude Interceptor Trial page.
2. Enter the requested contact information (name, address, etc.).
3. Enter the name of your mail server, which is a fully qualified host name, for example mail.mycompany.com
4. Enter a password of your choosing.
5. Click the Register button.

Your trial key is displayed on the Declude Interceptor 21 Day Trial page. The key consists of five alphanumeric values separated by dashes, for example:

```
INTB2AE85BB-54AC-4B34-9662-10C5D92DFEE3
```

Make a note of the key as you will need to enter it during the installation process.

Install Declude Interceptor

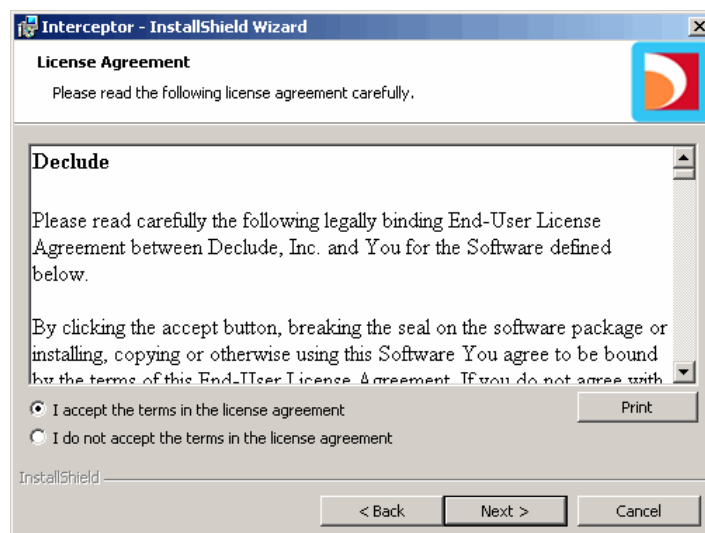
1. Click on the link [Download your Interceptor free trial software](#) and then click the Run button in the File Download dialog.

You may see a security warning indicating that the digital signature is from an unknown publisher. Click the Run button to dismiss the warning and proceed with the installation.

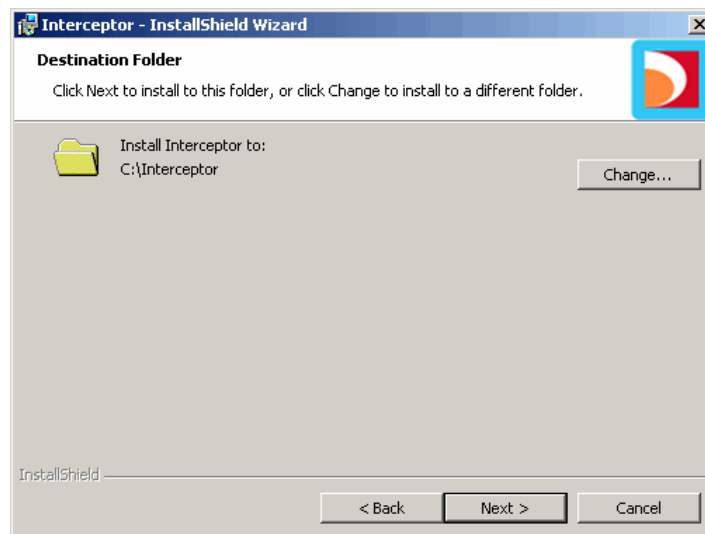
The first screen of the InstallShield Wizard displays, as shown in the following figure:



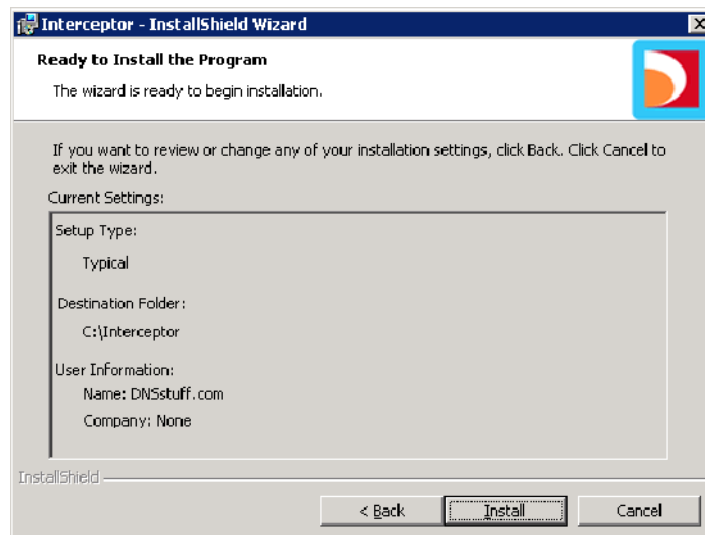
2. Welcome: Click Next to continue the installation.
3. License: Accept the terms of the license agreement by selecting the radio button. (You can optionally print the 7 page license agreement). Click Next to continue the installation.



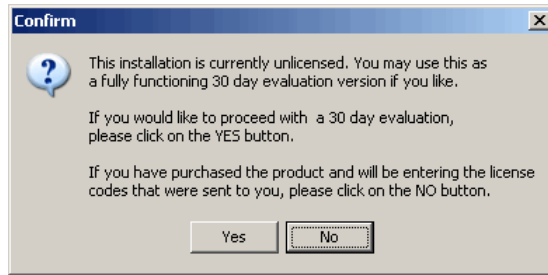
4. Destination Folder: By default, the software is installed to C:\Interceptor. To install to a different location, click the Change button. Enter or browse for the new destination folder and click the OK button.



5. Review your installation settings and click the Back button to make any changes. Click Install to begin installing the software.

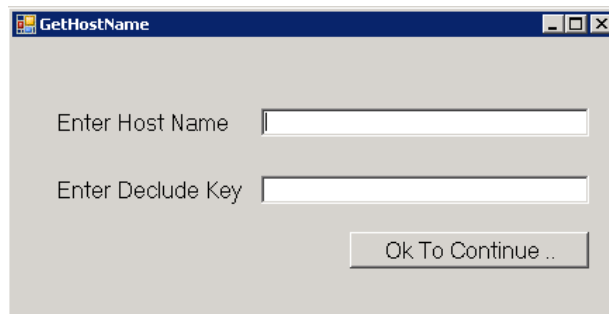


6. In the Confirm dialog, click the Yes button.



7. In the GetHostName dialog there are two fields:

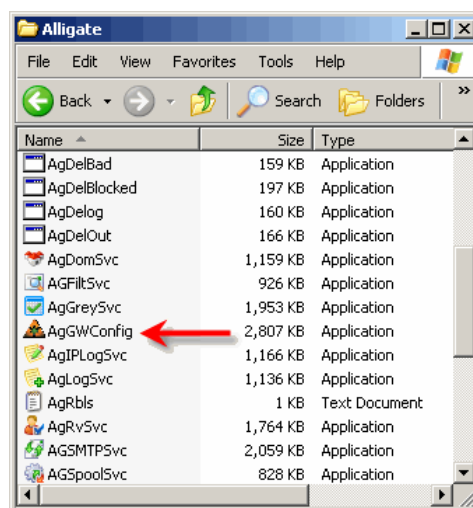
- Enter Host Name: Enter the name of your mail server in the field (this is the same host name you entered when signing up for the trial).
- Enter Declude Key: This is the Declude trial key you copied from the Declude Interceptor 21 Day Trial page prior to downloading the installer.



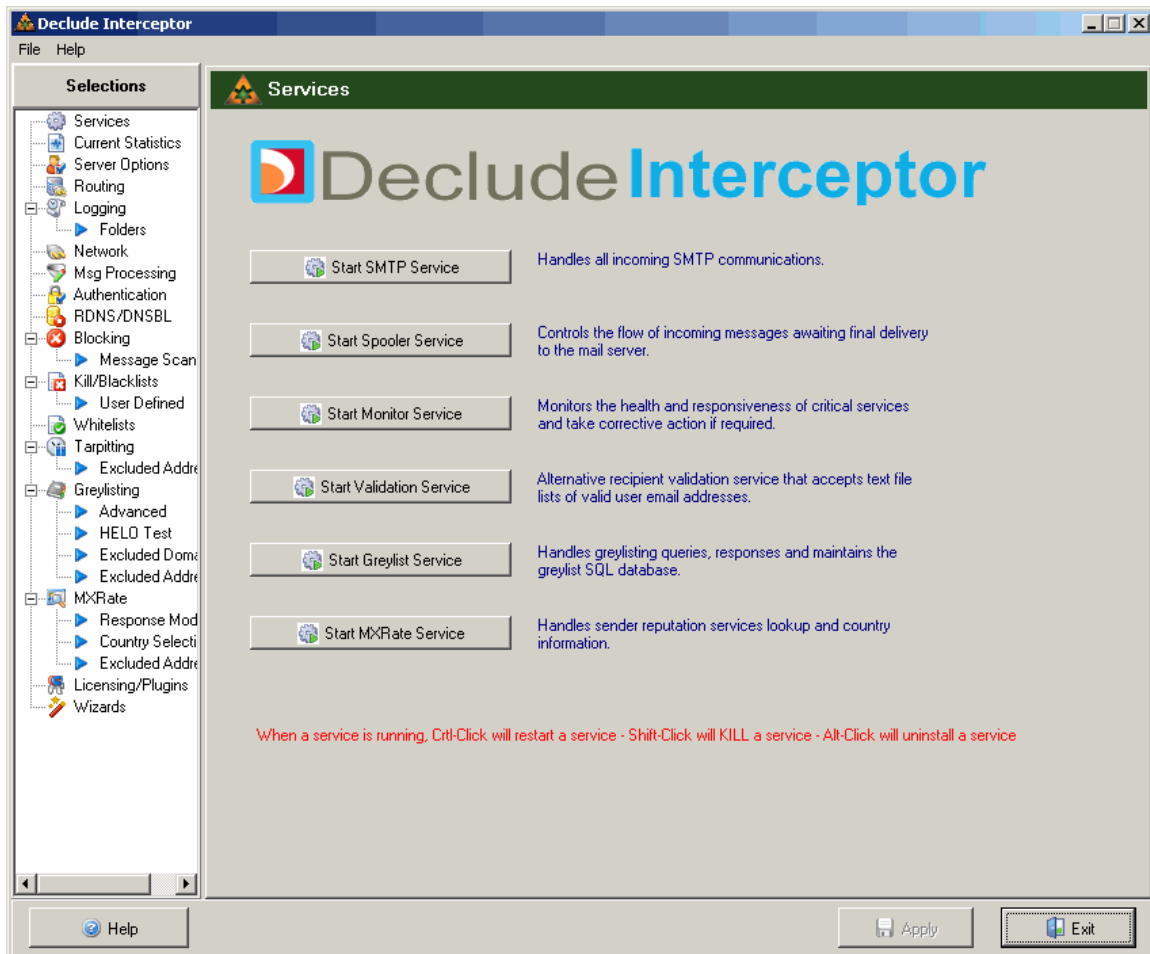
8. When the installation is complete, click Finish.

Start the SMTP Gateway and the Windows Service

1. Navigate to the installation folder (by default C:\Interceptor), double click on the Alligate folder, and then double-click on the application file AgGWConfig.exe to start the SMTP Gateway:



The home page for Declude Interceptor is displayed, as shown in the following figure. The page contains two panels: clicking on a link in the Selections panel displays the Declude Interceptor page of the same name in the right panel. For example, clicking the [Services](#) link displays the Services page in the right panel.



2. Select Start → Administrative Tools → Services to display to the Windows Services dialog. Scroll down the list of services to make sure that the decludeproc service is started. If not, start the service.

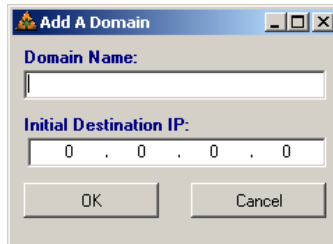
Rout Mail to Your Mail Server

1. In the Selections panel on the left side of the page, click the [Routing](#) link to display the Routing page. On the routing page you define how you want to handle e-mail for each domain you host. This information enables Declude Interceptor to validate recipients and to route safe incoming e-mail to your mail server.

Note: If you are using the BASIC or ADVANCED versions, only the first routing definition will be used. You must be licensed for the PRO version to utilize multiple destination servers.

To get started with your trial, the only information you need to enter on this page is your mail server's IP address and the domain name for which you want Declude Interceptor to accept mail.

2. Click the Add button under the Primary Domains list. The Add a Domain dialog is displayed:

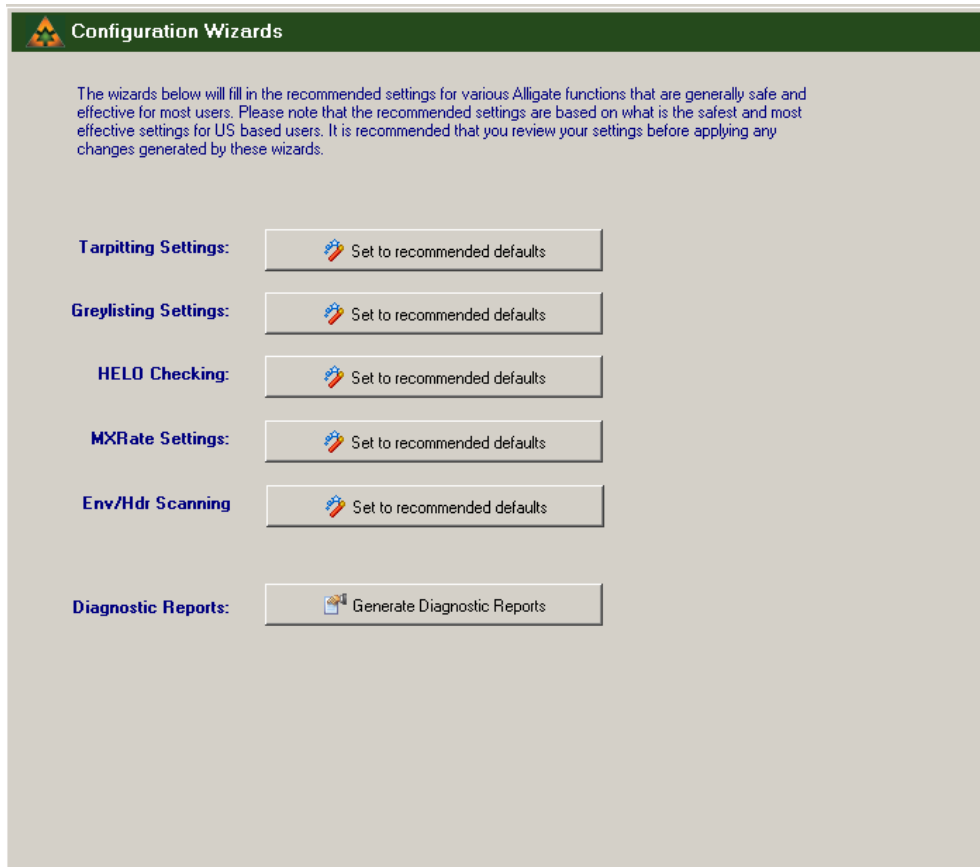


- Domain Name : Enter the main or 'major' domain on your mail server.
- Initial Destination IP: Enter your mail server's IP address (this is typically your SMTP server). The field is pre-populated with zeroes. To enter the IP address, tab through the field, replacing the zeros with the digits of your IP address.

Note: Your SMTP server listens by default on port 25. If this has been configured differently at your site, select a different port number from the Port drop-down.

The routing table data is maintained in a file named routing.txt in the ..\Alligate directory. Whenever the routing table is changed, a backup copy is created in this directory before the changes are saved.

Use the Wizard to Complete the Setup

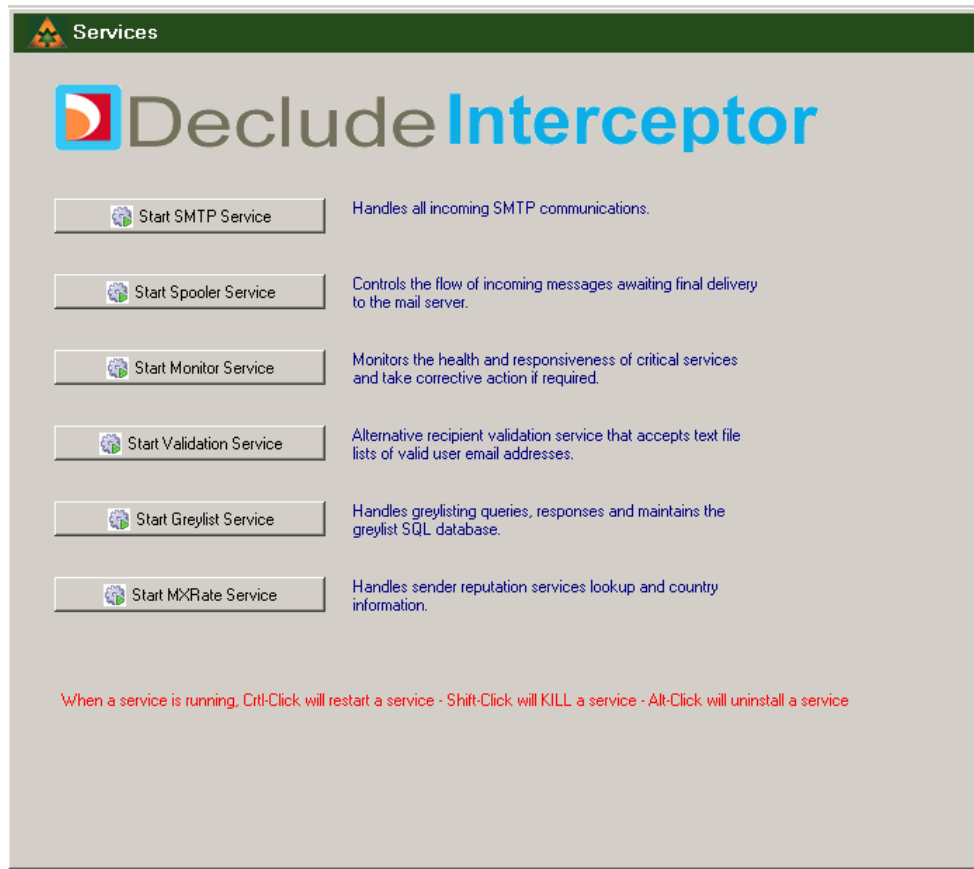


To display the Configuration Wizards panel, click on the [Wizards](#) link in the Selections panel (the last link in the list). You can use these Wizards to pre-fill most of the remaining Declude Interceptor settings with recommended default values. To do so, one by one, click the Set to recommended defaults button for each wizard.

Note: These recommended settings generally apply to US based installations with a medium daily volume of connections (100,000 or less) and some adjustments may be necessary for your particular installation.

Start the Services

In the Selections panel, click on the [Services](#) link to display the Services page:



One by one, click on the Start button for each of the six services.

Send SMTP Traffic to the SMTP Engine

Once Declude Interceptor is installed, you need to send SMTP traffic to it so that the SMTP engine can receive email. You have two options: the best choice, if possible, is to redirect traffic by protocol at your router or firewall. If this is not an option, then you can change MX records.

Redirecting SMTP Traffic: If you have the capability of redirecting traffic by protocol at your router or firewall, this is by far the best choice. No DNS changes are necessary, and it is a fast and easy task no matter how many domains you receive mail for. The effects are instantaneous and are easy to undo or change if this is ever necessary.

Depending on your router/firewall firmware, you will need to define a routing rule for SMTP or port 25 traffic. All you need to do is to tell the router/firewall to send all SMTP or port 25 traffic to the Declude Interceptor server's IP address. Declude Interceptor will handle the rest.

Changing MX records: This is a good choice when you have a small number of domains for which you handle mail. Many administrators will add the IP address of their Declude Interceptor server as the primary MX address for the domains they receive mail for. Many also leave their original mail server in the MX list as a lower priority mail server.

Leaving your mail server in the MX list will provide some redundancy in the event of a failure of the primary MX record, however it also leaves the door open to spammers who routinely attempt to bypass the primary server and use a secondary MX record to attempt to deliver their messages. In fact, this is quite common and Declude does not recommend doing this.

There are downsides to changing MX records. First, it can be cumbersome, especially if you do not run your own DNS server as an authoritative server for the domains you manage. Secondly, it can take 24 hours or longer for MX record changes to propagate across the Internet, and if you need to make any changes, or make a mistake, it could conceivably take several days for everything to settle down.

If you do decide to change your MX records, you must give the Declude Interceptor server the highest priority and preferably make it the only address listed.

If IIS is Running

One of the most frequent issues new users experience is a port conflict with the Declude Interceptor SMTP service. If you are installing on any version of Windows server, it is likely that Microsoft Internet Information Server (IIS) is also installed on the same machine. In many cases, the Microsoft SMTP server is enabled and listening on port 25. If you have IIS installed, open the IIS manager and stop the Default SMTP server as well as any other virtual SMTP servers you might have configured. Also open the Windows Service Manager and check for the MS SMTP service. If it is running, make sure you stop it and set the properties of the service so that it can only be started manually.